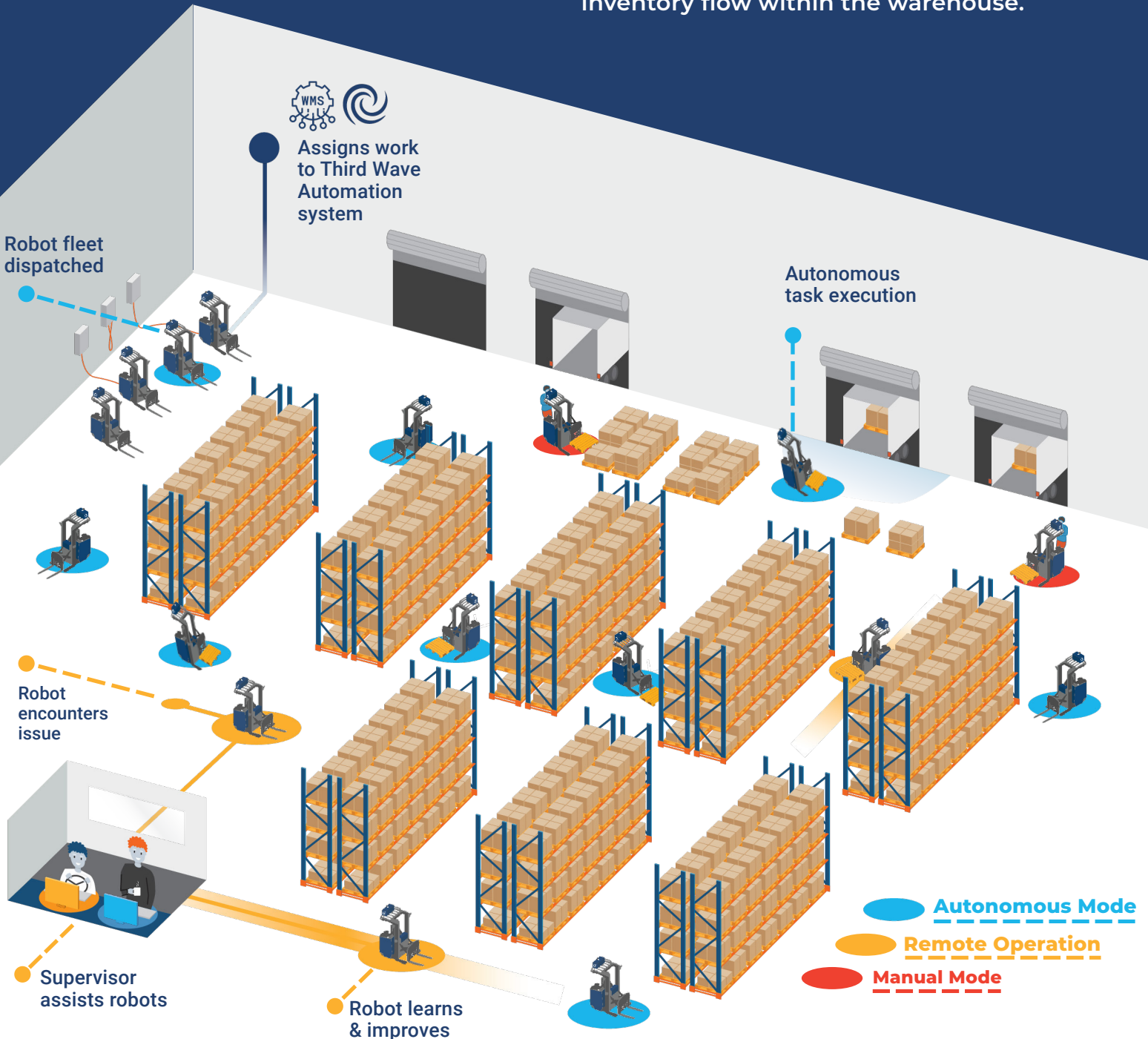


Multiply Human Potential

Our AI-powered autonomous forklifts improve productivity in your operation by working alongside your team to optimize inventory flow within the warehouse.



Autonomous Mode

Autonomous mode supports complete dock-to-dock workflows, from putaway to picking to replenishment, with end-to-end navigation and pallet manipulation designed for busy warehouse environment. Fleet management continuously optimizes multi-truck routes to increase throughput, reduce idle time, and adapt to shifting demand.

Remote Assist

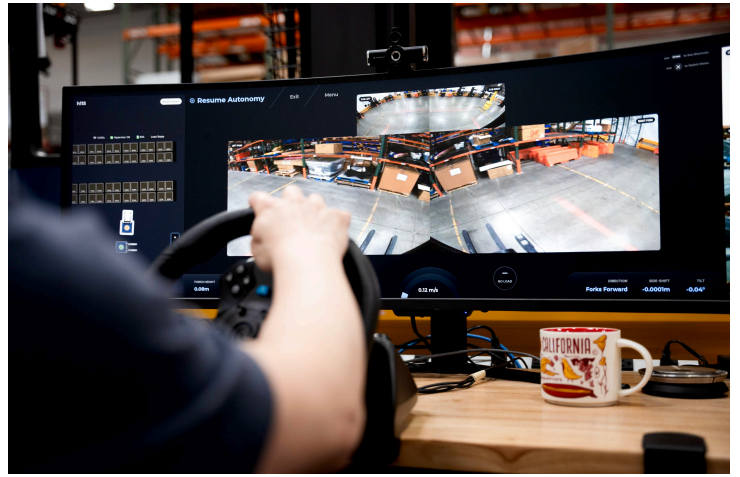
Assists are delivered via a clear user interface and ask operators for help or confirmation. The operator can either provide feedback to the system, allowing it to resume the task, or to complete the task via remote control.

Remote Operation

Our remote interface consists of an easy to use, familiar hardware interface coupled with an informative heads-up display that provides high visibility to your operators.

Rapid Deployment, Continuous Improvement

- **Fast qualification & pilots:** From truck delivery to production moves in just 2 weeks.
- **Minimal disruption:** Our solution requires no fixed infrastructure, allowing it to be rolled out with minimal disruption and deliver value quickly.
- **Full deployment in 1–4 months** with rapid results and expandable rollout.
- **Scalable Solution:** Versatile platform grows alongside your operation to meet evolving needs.

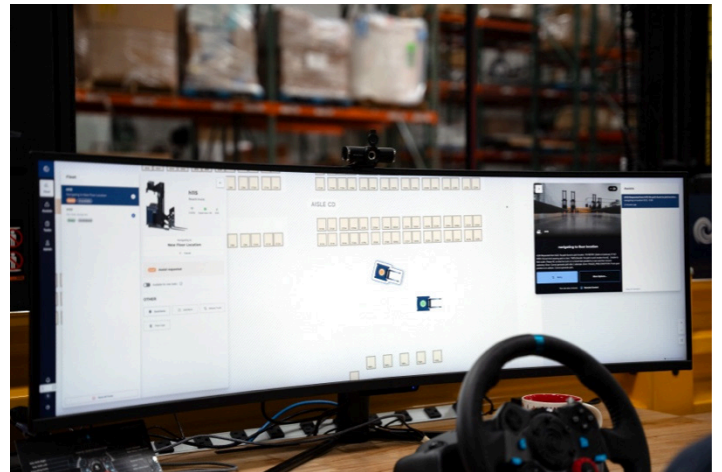


Fast ROI: Payback In <12 Months

- **Workforce Optimization:** Up to 90% labor optimization with one operator overseeing up to 10 forklifts.
- **Rapid Payback:** Over 30% labor cost savings with payback period under 12 months.
- **Continuous Improvement:** AI-driven platform adapts to process changes and delivers actionable insights.
- **Inventory Accuracy:** Pallets placed exactly where you want them, every time.
- **Near elimination of racking damage:** 99.99% reduction in costly repairs.
- **Improved safety:** Autonomous forklifts eliminate human error and reduce warehouse accidents.

1 Operator Manages 10 Forklifts

- Third Wave Automation's proprietary Armada Fleet Management System (FMS) is the central interface for accessing Third Wave products and services.
- ArmadaFMS enables operators to manage multiple vehicles, workflows, and warehouse zones simultaneously through "fanout" capability, allowing supervision of a growing number of forklifts over time.
- Built on machine learning technology, the system continuously adapts to navigate new operational challenges, delivering a robust solution from Day 1 that becomes increasingly capable with use.



Third Wave Automation™ was founded in 2018 in Union City, CA, to alleviate increasing supply chain stress using intelligent automation products and services. Leveraging artificial intelligence to create its Shared Autonomy Platform, Third Wave brings people and automated systems together to improve throughput, efficiency, and safety beyond what either people or automation could achieve alone.